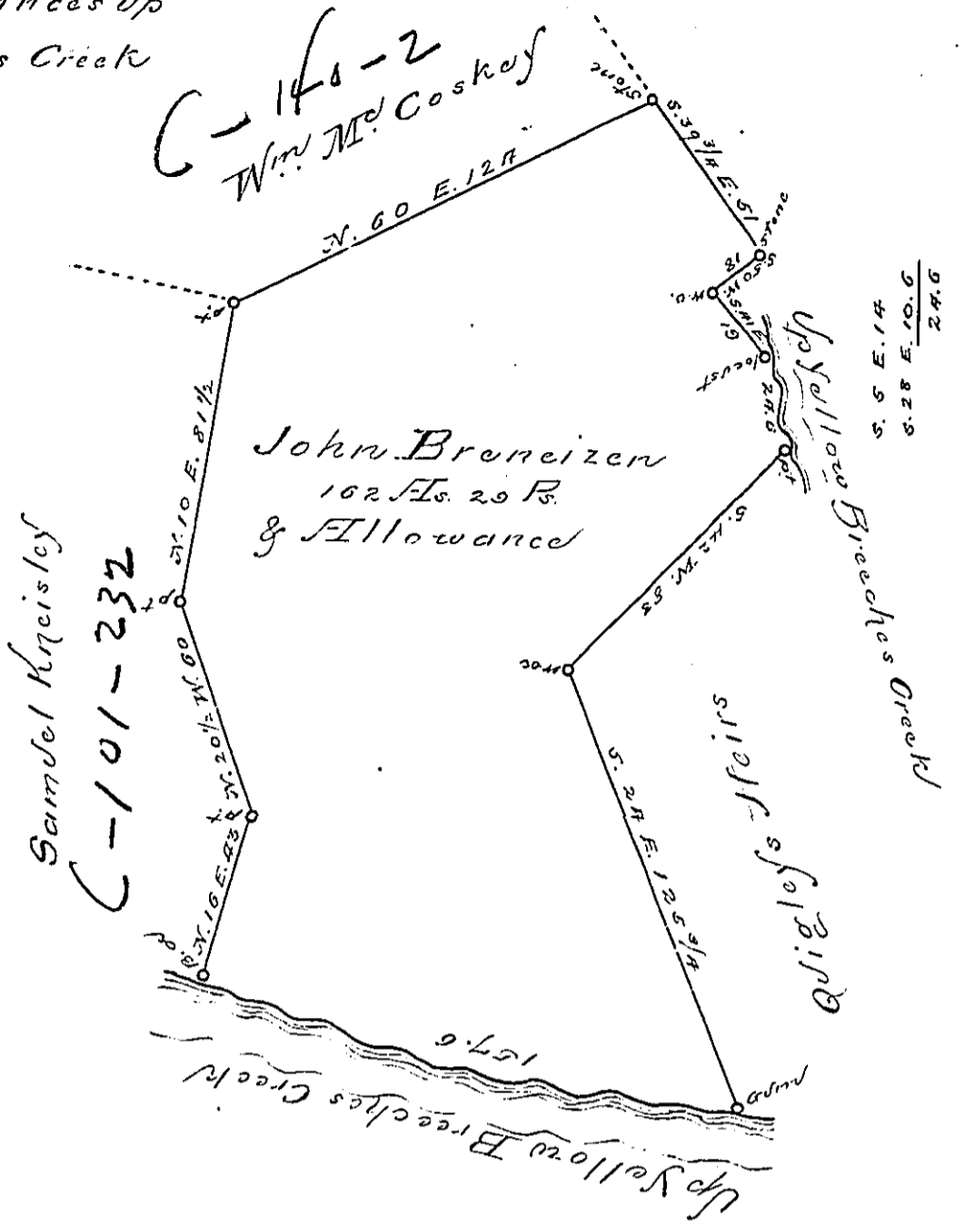


Courses & distances up
Yellow Breeches Creek

N.	70	W.	10
S.	56	W.	9
N.	85	W.	12
N.	70	W.	30
N.	45	W.	12
N.	25	W.	9
N.	85	W.	55
S.	85	W.	20.6
			157.6



A Draught of a Tract of Land Situate in
Allen Township Cumberland County containing
162 A. 29 P. & allowance of six P. Cont for Roads &c.
Surveyed for John Breneizer (alias Brenner)
In pursuance of a Warrant of Recovery Dated
the 2^d Day of December 1812. December 9th 1812

J. Andrew Porter Esq. J.G. Wm. Wheeler S.S.

IN TESTIMONY that the above is a copy of the original remaining on file in the
Department of Internal Affairs of Pennsylvania, made con-
formably to an Act of Assembly approved the 16th day of
February, 1833, I have hereunto set my Hand and caused
the Seal of said Department to be affixed at Harrisburg, this

—thirtieth— day of —March— 1894

Thos. J. Stewart
Secretary of Internal Affairs